

## FOR TENDER

The general is to be used in conjunction with the following Office of Occupational Safety and Health (OSHA) standards and regulations. Disregarded standards and their constituent details are: OSHA standards, regulations, and interpretations that are not applicable to the construction of new consumer durables products; OSHA standards, regulations, and interpretations that are to be replaced by amendments to the Disposal Code.

All construction materials and workmanship are to be in accordance with the Building Code of Australia and the relevant current Australian Standards. All details of construction are to be in accordance with the relevant current Australian Standards. All applications in accordance with manufacturer instructions.

Do not scale from these drawings. Figure dimensions only are to be used. In detail, all dimensions are in millimetres and all measurements are to be rounded off to the nearest millimetre. All dimensions are to be taken from the face of the material unless otherwise specified. All dimensions are to be taken from the face of the material unless otherwise specified.

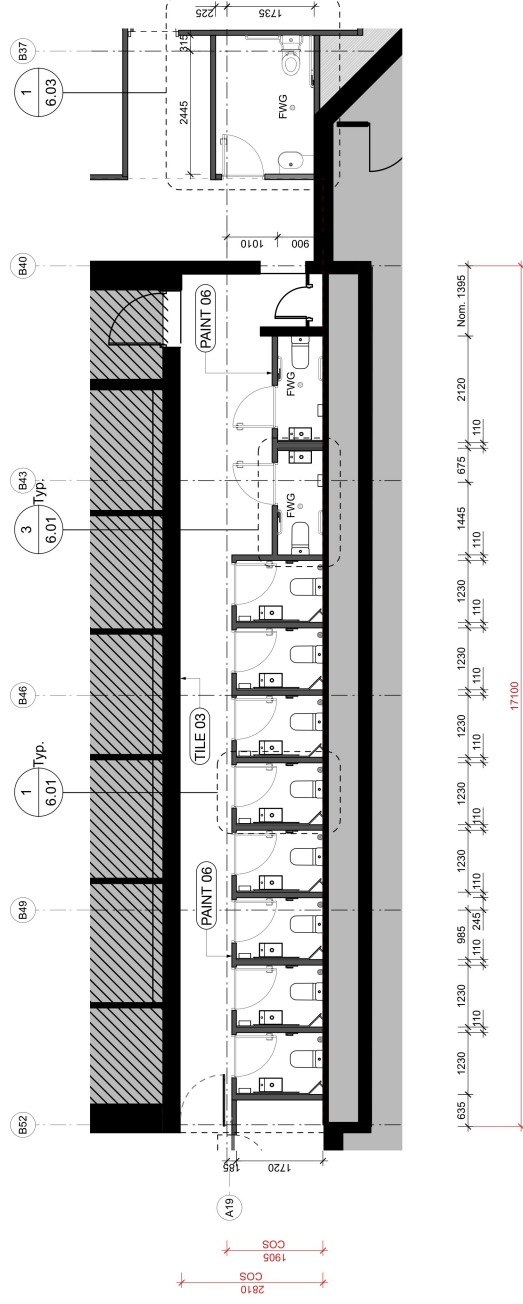
Confirm all equipment sizes, installation requirements and services required by equipment with relevant OSHA regulations for installation. Do not install equipment in a manner prior to installation. Provide power to all equipment in accordance with manufacturer instructions.

Drawings show design intent only. Contractor must take responsibility for structural requirements and details. Contractor must ensure that all equipment is installed in accordance with the relevant OSHA regulations for installation. Contractor is to ensure that all equipment is installed in accordance with the relevant OSHA regulations for installation.

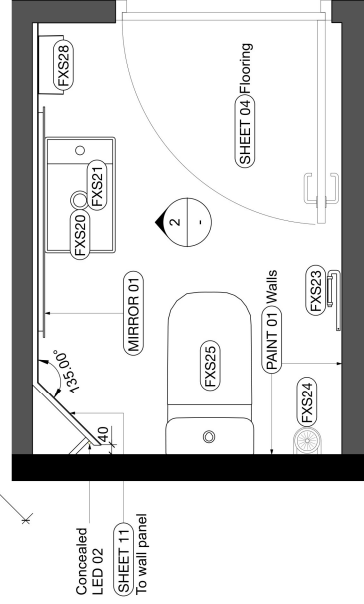
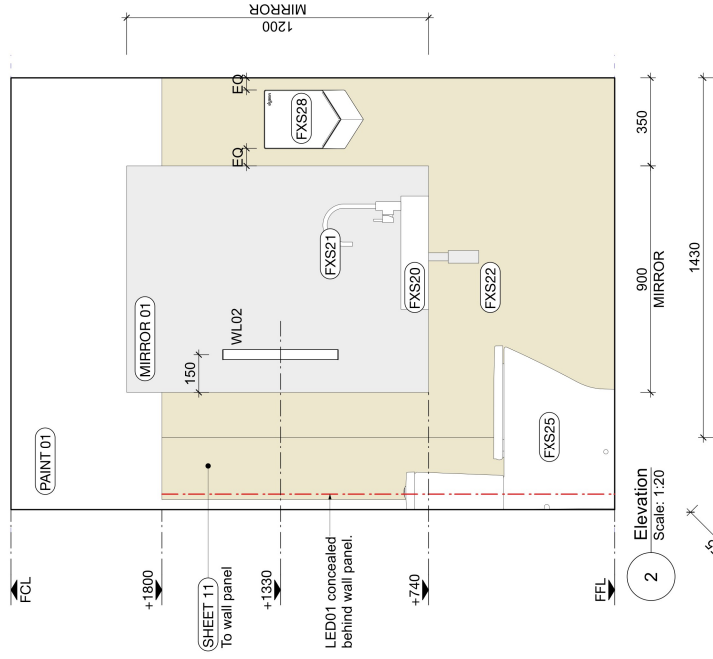
REV	DESCRIPTION	DATE	NOTES
	A FOR TENDER	18/4/24	
	B FOR TENDER	9/5/24	

Client			
<b>The Commons</b>			
Project			
Drawing title			
<b>The Commons Collins St</b>			
Level 01 Amenities Plan			
Drawing Number			
Revision			
6.00	<b>B</b>		
<b>For Tender</b>			
Drawn By			
Checked By			
Date			
Scale @ A3			
9/5/24			
55 Collins St, 3000 Melbourne			
Project			
Client			

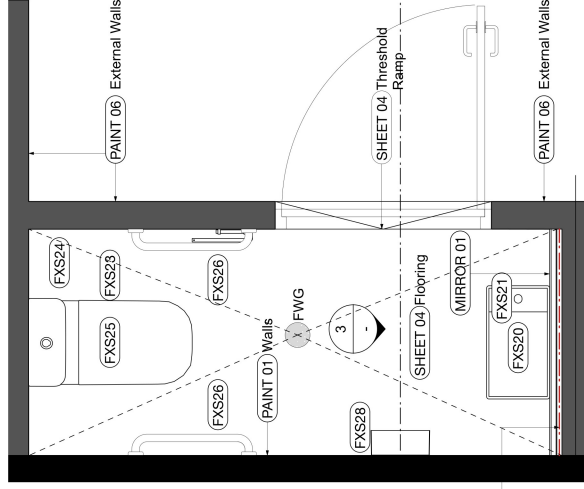
**NOTE:**  
ALL DIMENSIONS NEED TO BE VERIFIED ON SITE.  
DESIGN OFFICE TO BE ADVISED IF THERE IS ANY  
VARIATION IN BASE BUILD DOCUMENTATION.  
REFER HYDRAULIC ENGINEERS DRAWINGS FOR  
DETAILS.



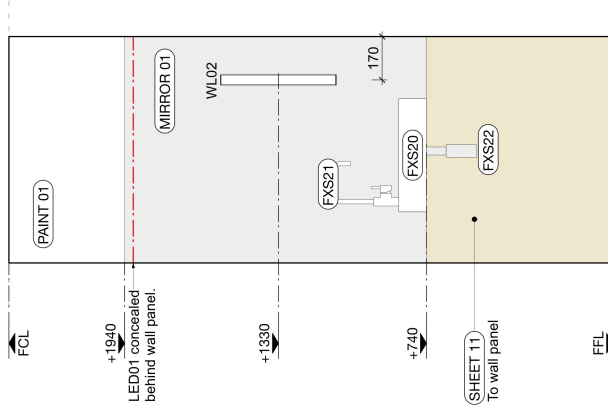
1 Level 01 Amenities Plan  
Scale: 1:100



1 Typical Toilet Suite  
Scale: 1:20



3 Ambulant Toilet Suite  
Scale: 1:20



4  
Elevation  
Scale: 1:20

[illegible]

REV	DESCRIPTION	DATE	NOTES
A	FOR TENDER	19/01/24	
B	FOR TENDER	30/01/24	

Client	Project Number
The Commons	P1103
Project	Drawing title
The Commons Collins St	Level 01 Toilet Suites
55 Collins St, 3000 Melbourne	Drawing Number
Date	Revision
9/5/24	B
Scale @ A3	
1:100	
Drawn By	For Tender
DM	



