

- One Layer Of 5/8" Type X Gyp. Bd Each Side Of 3 5/8" Metal Studs At 1' 4" OC @ 11'H
- One Layer Of 5/8" Type X Gyp. Bd Each Side Of 3 5/8" Metal Studs At 1' 4" OC @ 9'H
- One Layer Of 5/8" Type X Gyp. Bd Each Side Of 3 5/8" Metal Studs At 1' 4" OC @ 21'H
- One Layer Of 5/8" Type X High Impact Resistant Gyp. Bd Each Side Of 6" Metal Studs At 1' 4" OC @ 13'H
- One Layer Of 5/8" Type X High Impact Resistant Gyp. Bd Each Side Of 6" Metal Studs At 1' 4" OC @ 3'H
- One Layer Of 5/8" Type X Gyp. Bd Each Side Of 3 5/8" Metal Studs At 1' 4" OC @ 12'H
- One Layer Of 5/8" Type X Gyp. Bd Each Side Of 3 5/8" Metal Studs At 1' 4" OC @ 3'H
- One Layer Of 5/8" Type X Gyp. Bd Each Side Of 3 5/8" Metal Studs At 1' 4" OC @ 10'H
- One Layer Of 5/8" Type X Moisture Resistant Gyp. Bd Each Side Of 3 5/8" (2) Metal Studs At 1' 4" OC @ 9'H
- One Layer Of 5/8" Type X Moisture Resistant Gyp. Bd Each Side Of 3 5/8" (2) Metal Studs At 1' 4" OC @ 10...
- One Layer Of 5/8" Type X High Impact Resistant Gyp. Bd Each Side Of 6" Metal Studs At 1' 4" OC @ 10'H
- One Layer Of 5/8" Type X High Impact Resistant Gyp. Bd Each Side Of 6" Metal Studs At 1' 4" OC @ 1'H
- One Layer Of 5/8" Type X High Impact Resistant Gyp. Bd Each Side Of 6" Metal Studs At 1' 4" OC @ 23'H
- One Layer Of 5/8" Type X Gyp. Bd Each Side Of 3 5/8" Metal Studs At 1' 4" OC @ 2'H
- One Layer Of 5/8" Type X Gyp. Bd Each Side Of 3 5/8" Metal Studs At 1' 4" OC @ 1'H
- Corner Bead

- 6075.3 SQ FT
- 450.9 SQ FT
- 7662.9 SQ FT
- 2787.2 SQ FT
- 74.4 SQ FT
- 2348.4 SQ FT
- 96.3 SQ FT
- 4089.0 SQ FT
- 1795.5 SQ FT
- 342.0 SQ FT
- 1221.0 SQ FT
- 35.8 SQ FT
- 8250.1 SQ FT
- 151.8 SQ FT
- 32.5 SQ FT
- 131.0 EA

NOTES	NOTES
A. ALL METAL STUDS TO BE SPACED AT 1'-4" O.C. UNLESS NOTED OTHERWISE.	
B. INSULATION COLUMN: (1) - INDICATES NO INSULATION TO BE PLACED IN PARTITION CAVITY. (2) DIMENSION INDICATES THICKNESS OF SOUND ATTENUATION BLANKETS TO BE PLACED IN PARTITION CAVITY. ATTACH BLANKETS SECURELY IN WALL CAVITY TO PREVENT FALING.	
C. ALL GYPSUM BOARD TO BE 5/8" THICK, UNLESS NOTED OTHERWISE.	
SPECIFIC NOTES	

PARTITIONS ARE CONTINUOUS ACROSS DOORWAYS, OPENINGS AND ABUTTING PARTITIONS; A TAG SHOWN IN ONE SEGMENT OF A PARTITION APPLIES TO ALL UNMARKED SEGMENTS THAT ARE IN LINE WITH AND CONTINUOUS WITH THE TAGGED SEGMENT.
FOR WALL TIE APPLICATIONS, USE WATER RESISTANT GYP. BOARD.

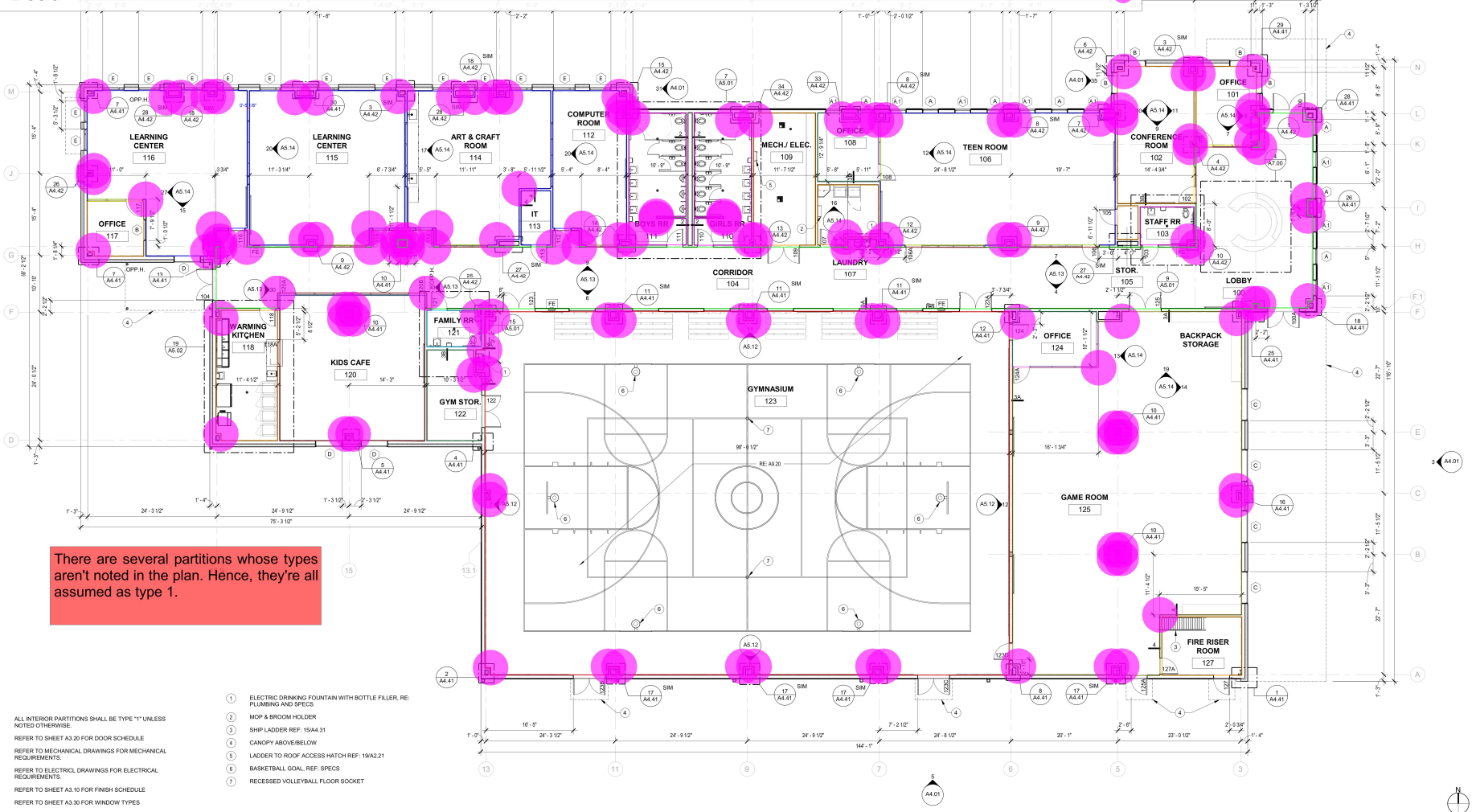
PARTITION SCHEDULE & GENERAL NOTES NO SCALE 6

SMITH & COMPANY ARCHITECTS
ARCHITECT
SMITH & COMPANY ARCHITECTS
720 N POST OAK, SUITE 100
HOUSTON, TX 77058
STRUCTURAL ENGINEER
STANLEY SPURLING & HAMILTON INC.
300 EOLLE ST
HOUSTON, TX 77007
CIVIL ENGINEER
LJA ENGINEERING
1504 W GRAND PARKWAY N, SUITE 100
MAYT, TX 77448
LANDSCAPE ARCHITECT
STUDIO AWD
506 FM 2916 RD., #500
SPRING, TX 77379
MEP ENGINEER
INFRASTRUCTURE ASSOCIATES
6117 REICHMAN AVE, SUITE 200
HOUSTON, TX 77057
TYPE FIRM REG-4506
TECHNOLOGY CONSULTANT
TECH NORTH CONSULTANT GROUP
3405 HILLCREST DR.
MADISON, TX 77640
PROJECT # N3032023
DATE ISSUED: 02.29.2024
TDLR #: TABS2024011699
REVISIONS:
NO. DATE DESCRIPTION

FRESNO BOYS & GIRLS CLUB
1031 W SYCAMORE RD
FRESNO, TX 77545

FLOOR PLAN

100% Construction Document
02.29.2024
A2.01



There are several partitions whose types aren't noted in the plan. Hence, they're all assumed as type 1.

- 1. ALL INTERIOR PARTITIONS SHALL BE TYPE "1" UNLESS NOTED OTHERWISE.
- 2. REFER TO SHEET A3.20 FOR DOOR SCHEDULE
- 3. REFER TO MECHANICAL DRAWINGS FOR MECHANICAL REQUIREMENTS
- 4. REFER TO ELECTRICAL DRAWINGS FOR ELECTRICAL REQUIREMENTS
- 5. REFER TO SHEET A3.10 FOR FINISH SCHEDULE
- 6. REFER TO SHEET A3.30 FOR WINDOW TYPES
- 1. ELECTRIC DRINKING FOUNTAIN WITH BOTTLE FILLER, RE: PLUMBING AND SPECS
- 2. MOP & BROOM HOLDER
- 3. SHIP LADDER REF: 15/A.31
- 4. CANOPY ABOVE/BELOW
- 5. LADDER TO ROOF ACCESS HATCH REF: 19/A.21
- 6. BASKETBALL GOAL, RE: SPECS
- 7. RECESSED VOLLEYBALL FLOOR SOCKET

FLOOR PLAN GENERAL NOTES NO SCALE 31

FLOOR PLAN KEY NOTES NO SCALE 25

FLOOR PLAN 1/8" = 1'-0" 1

- ① ELECTRIC DRINKING FOUNTAIN WITH BOTTLE FILLER, RE: PLUMBING AND SPECS
- ② MOP & BROOM HOLDER
- ③ SHIP LADDER REF: 15/A4.31
- ④ CANOPY ABOVE/BELOW
- ⑤ LADDER TO ROOF ACCESS HATCH REF: 15/A2.21
- ⑥ BASKETBALL GOAL, REF: SPECS
- ⑦ RECESSED VOLLEYBALL FLOOR SOCKET

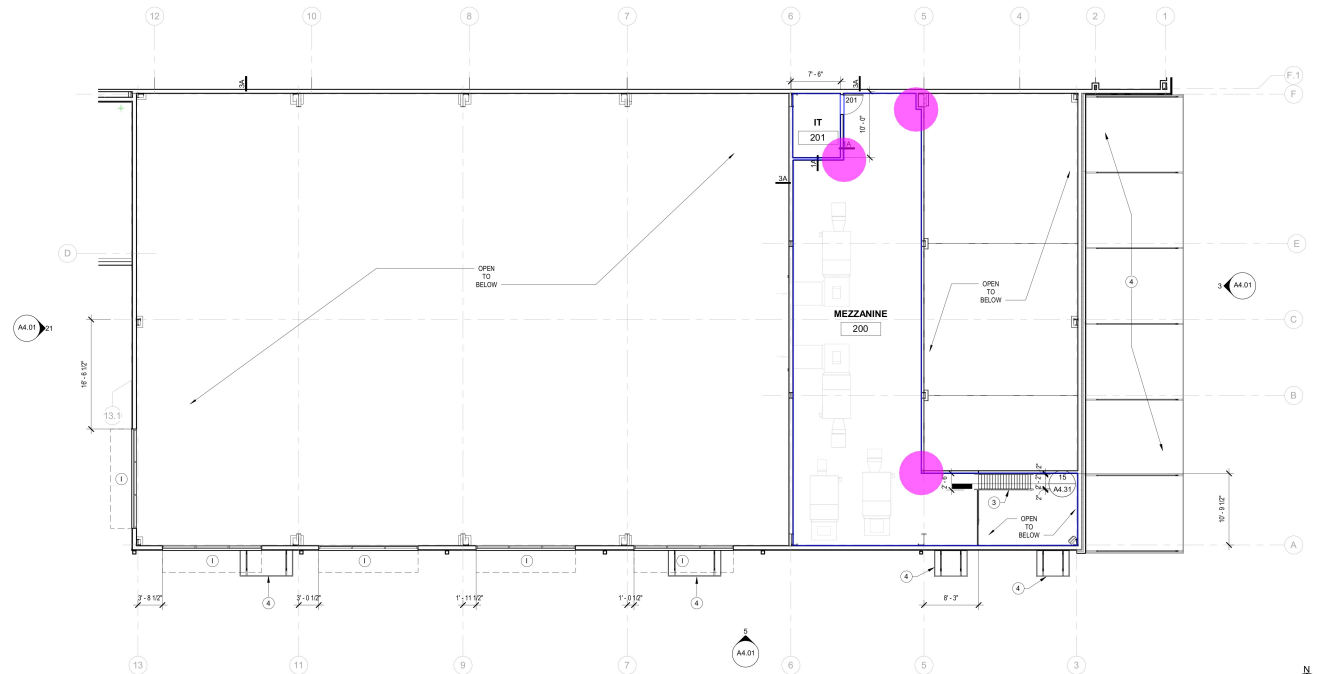
1. ALL INTERIOR PARTITIONS SHALL BE TYPE "1" UNLESS NOTED OTHERWISE.
2. REFER TO SHEET A3.20 FOR DOOR SCHEDULE.
3. REFER TO MECHANICAL DRAWINGS FOR MECHANICAL REQUIREMENTS.
4. REFER TO ELECTRICAL DRAWINGS FOR ELECTRICAL REQUIREMENTS.
5. REFER TO SHEET A3.10 FOR FINISH SCHEDULE.
6. REFER TO SHEET A3.30 FOR WINDOW TYPES.

FLOOR PLAN KEY NOTES

NO SCALE 25

FLOOR PLAN GENERAL NOTES

NO SCALE 31



FRESNO BOYS & GIRLS CLUB
1031 W SYCAMORE RD
FRESNO, TX 77545

FLOOR PLAN -
MEZZANINE

100% Construction Document
02.29.2024

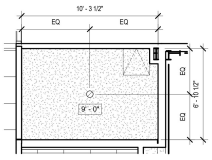


A2.02

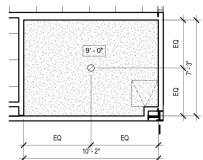
One Layer Of 5/8" Type X Gyp. Bd Each Side Of 3 5/8" Metal Studs At 1' 4" OC @ 7'H
Corner Bead

1794.1 SQ FT
3.0 EA

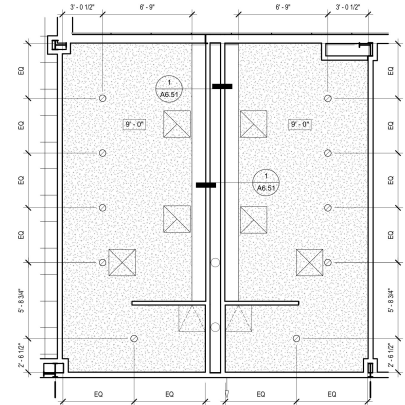
MEZZANINE FLOOR PLAN 1/8" = 1'-0" 1



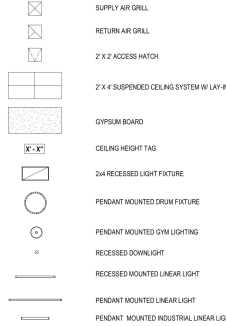
RCP FAMILY RESTROOM 1/4" = 1'-0" 36



RCP STAFF RESTROOM PLAN 1/4" = 1'-0" 38



RCP BOYS & GIRLS RESTROOM PLAN 1/4" = 1'-0" 24



SUPPLY AIR GRILL
RETURN AIR GRILL
2' X 2' ACCESS HATCH
2' X 4' SUSPENDED CEILING SYSTEM W/ LAY-IN
GYPSUM BOARD
CEILING HEIGHT TAG
24" RECESSED LIGHT FIXTURE
PENDANT MOUNTED DRUM FIXTURE
PENDANT MOUNTED GYM LIGHTING
RECESSED DOWNLIGHT
RECESSED MOUNTED LINEAR LIGHT
PENDANT MOUNTED LINEAR LIGHT
PENDANT MOUNTED INDUSTRIAL LINEAR LIGHT

- 1 NO CEILING, OPEN TO STRUCTURE
- 2 LED LIGHT FIXTURE RECESSED IN SOFFIT, RE. ELEC.
- 3 CANOPY ABOVE
- 4 OVERHEAD ROLLING DOOR
- 5 OPEN TO ABOVE, REF. TO SHEET A6.02

1. NOTIFY THE ARCHITECT OF ANY DIFFERENCE BETWEEN ARCHITECTURAL, REFLECTED CEILING PLANS AND MECHANICAL, ELECTRICAL, OR SPECIAL SYSTEM PLANS PRIOR TO COMMENCING WITH CONSTRUCTION.
2. ALL SCHEDULED CEILING AT 10' - 0" A.F.F., UNLESS NOTED OTHERWISE.
3. REFER TO MATERIALS SCHEDULE ON A3.11 FOR ALL CEILING FINISHES AND MATERIALS.
4. ALL PAINTED GYPSUM WALL BOARD (GWB) CEILINGS, ARE TO BE PAINTED (P1), UNLESS NOTED OTHERWISE.
5. REFER TO ELECTRICAL DRAWINGS FOR SCHEDULED LIGHT FIXTURES, DEVICES AND EQUIPMENT.
6. ALIGN A CENTER ALL SCHEDULED LIGHT FIXTURES & DIFFUSERS, UNLESS DIMENSIONED OR NOTED OTHERWISE ON RCP.
7. ALIGN CENTER ALL SCHEDULED CEILING MOUNTED SPEAKERS, SMOKE DETECTORS, CAMERAS, AND OCCUPANCY SENSORS, WHERE OCCURS, U.A.O.
8. ALL CEILING MOUNTED ACCESS DOORS, PANELS TO BE PAINTED (P1), U.A.O.

RCP LEGEND NO SCALE 17

RCP KEY NOTES NO SCALE 12

RCP GENERAL NOTES NO SCALE 6



FRESNO BOYS & GIRLS CLUB
1031 W SYCAMORE RD
FRESNO, TX 77545

REFLECTED CEILING
PLAN

100% Construction Document
02.29.2024



A6.01

ACT Ceiling
GWB Ceiling
Drywall Bulkhead @12'H

8592.1 SQ FT
745.3 SQ FT
304.8 SQ FT

REFLECTED CEILING PLAN 1/8" = 1'-0" 1